

RPS4Y1 Antibody (Center)
Affinity Purified Rabbit Polyclonal Antibody (Pab)
Catalog # AP12803c**Specification**

RPS4Y1 Antibody (Center) - Product Information

Application	WB, FC, IHC-P,E
Primary Accession	P22090
Other Accession	P49401 , P47836 , NP_000999.1
Reactivity	Human
Predicted	Chicken, Xenopus
Host	Rabbit
Clonality	Polyclonal
Isotype	Rabbit IgG
Calculated MW	29456
Antigen Region	76-105

RPS4Y1 Antibody (Center) - Additional Information**Gene ID** 6192**Other Names**

40S ribosomal protein S4, Y isoform 1, RPS4Y1, RPS4Y

Target/Specificity

This RPS4Y1 antibody is generated from rabbits immunized with a KLH conjugated synthetic peptide between 76-105 amino acids from the Central region of human RPS4Y1.

Dilution

WB~~1:2000

FC~~1:10~50

IHC-P~~1:10~50

E~~Use at an assay dependent concentration.

Format

Purified polyclonal antibody supplied in PBS with 0.09% (W/V) sodium azide. This antibody is purified through a protein A column, followed by peptide affinity purification.

Storage

Maintain refrigerated at 2-8°C for up to 2 weeks. For long term storage store at -20°C in small aliquots to prevent freeze-thaw cycles.

Precautions

RPS4Y1 Antibody (Center) is for research use only and not for use in diagnostic or therapeutic procedures.

RPS4Y1 Antibody (Center) - Protein Information

Name RPS4Y1

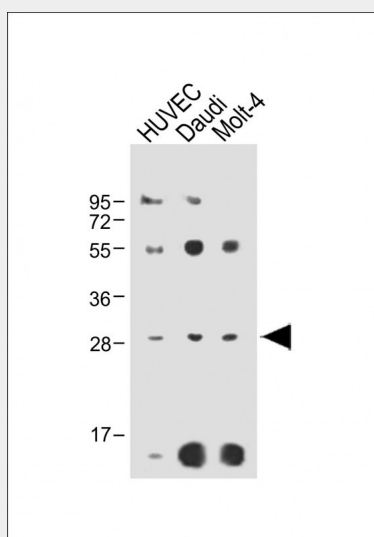
Synonyms RPS4Y

RPS4Y1 Antibody (Center) - Protocols

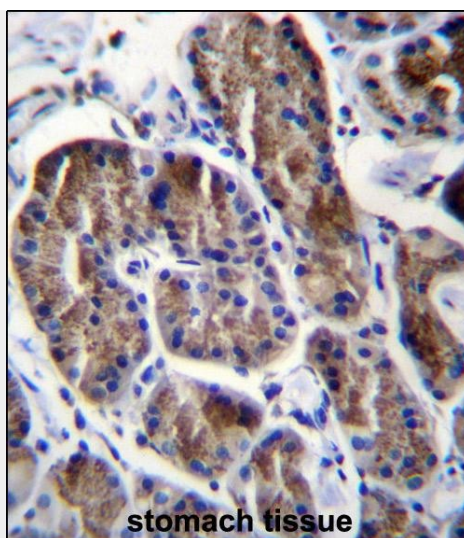
Provided below are standard protocols that you may find useful for product applications.

- [Western Blot](#)
- [Blocking Peptides](#)
- [Dot Blot](#)
- [Immunohistochemistry](#)
- [Immunofluorescence](#)
- [Immunoprecipitation](#)
- [Flow Cytometry](#)
- [Cell Culture](#)

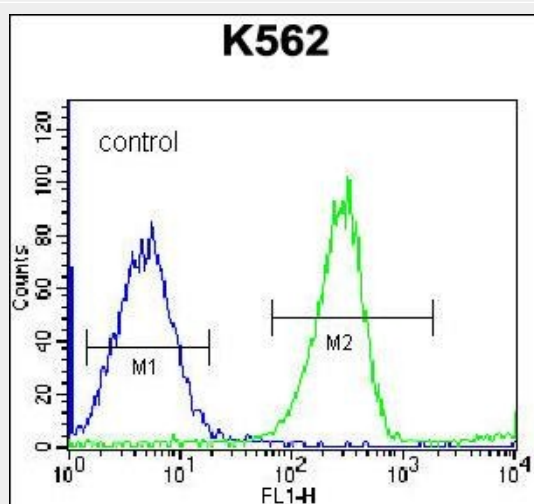
RPS4Y1 Antibody (Center) - Images



All lanes : Anti-RPS4Y1 Antibody (Center) at 1:2000 dilution Lane 1: HUVEC whole cell lysate Lane 2: Daudi whole cell lysate Lane 3: Molt-4 whole cell lysate Lysates/proteins at 20 µg per lane. Secondary Goat Anti-Rabbit IgG, (H+L), Peroxidase conjugated at 1/10000 dilution. Predicted band size : 29 kDa Blocking/Dilution buffer: 5% NFDM/TBST.



RPS4Y1 Antibody (Center) (Cat. #AP12803c) immunohistochemistry analysis in formalin fixed and paraffin embedded human stomach tissue followed by peroxidase conjugation of the secondary antibody and DAB staining. This data demonstrates the use of RPS4Y1 Antibody (Center) for immunohistochemistry. Clinical relevance has not been evaluated.



RPS4Y1 Antibody (Center) (Cat. #AP12803c) flow cytometric analysis of K562 cells (right histogram) compared to a negative control cell (left histogram). FITC-conjugated goat-anti-rabbit secondary antibodies were used for the analysis.

RPS4Y1 Antibody (Center) - Background

Cytoplasmic ribosomes, organelles that catalyze protein synthesis, consist of a small 40S subunit and a large 60S subunit. Together these subunits are composed of 4 RNA species and approximately 80 structurally distinct proteins. This gene encodes ribosomal protein S4, a component of the 40S subunit. Ribosomal protein S4 is the only ribosomal protein known to be encoded by more than one gene, namely this gene and ribosomal protein S4, X-linked (RPS4X). The 2 isoforms encoded by these genes are not identical, but are functionally equivalent. Ribosomal protein S4 belongs to the S4E family of ribosomal proteins. It has been suggested that haploinsufficiency of the ribosomal protein S4 genes plays a role in Turner syndrome; however, this hypothesis is controversial. As is typical for genes encoding ribosomal proteins,

there are multiple processed pseudogenes of this gene dispersed through the genome.

RPS4Y1 Antibody (Center) - References

Agate, R.J., et al. Mol. Biol. Evol. 21(2):384-396(2004)
Vawter, M.P., et al. Neuropsychopharmacology 29(2):373-384(2004)
Kapp, L.D., et al. Annu. Rev. Biochem. 73, 657-704 (2004) :
Skaletsky, H., et al. Nature 423(6942):825-837(2003)
Sampath, P., et al. Mol. Cell. Biol. 23(5):1509-1519(2003)